

Friends of the Mt Laurel Public Library



---

# **BUILDING A LIBRARY, BUILDING COMMUNITY.**

---



The Mt Laurel Public Library will be  
a branch of the North Shelby Library.

**FACT:**



**Imagine** a place where you can walk or take a short ride to visit a



public library and find easy access to a vast array of ideas and



information. **Imagine** a place where children, parents and



grandparents can come together to nurture a love of reading and lifelong



learning. **Imagine** a place for storytimes and community meetings.



**Imagine** this place that will be the Mt Laurel Public Library.



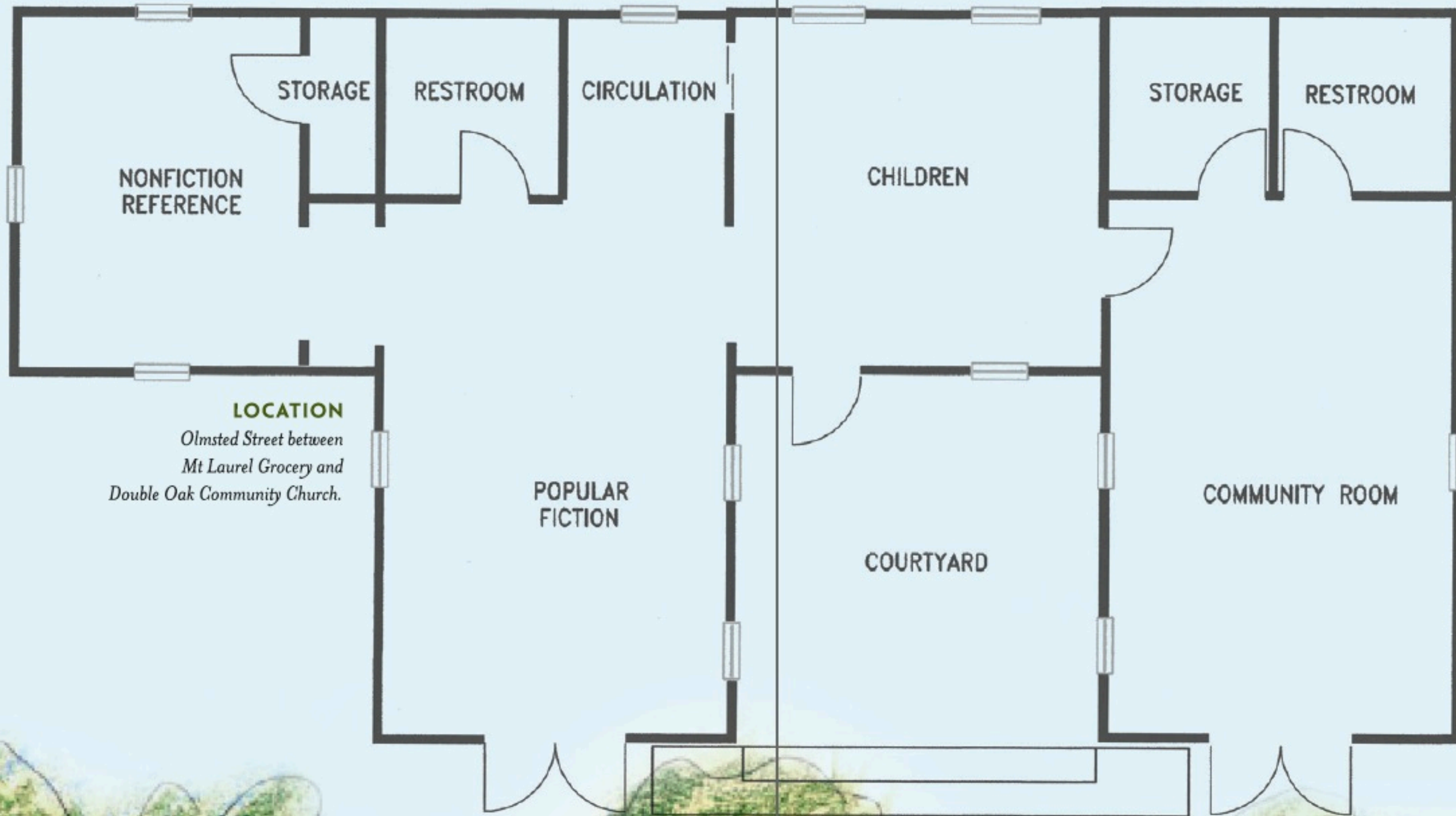
## **AN IMPORTANT MESSAGE**

*From the Friends of the Mt Laurel Public Library*



With the recent opening of Mt Laurel Public Library, we celebrated a major step toward making the dream of building a library to serve the Dunnavant Valley area a reality. Our space is nice, but small and temporary. The Friends of Mt Laurel Public Library organization is committed to raising the necessary funds to build a permanent library, which will be a fully functioning branch of the North Shelby Library. With our own building, we will be able to offer a more extensive library collection and services and provide a center for civic and cultural activities.

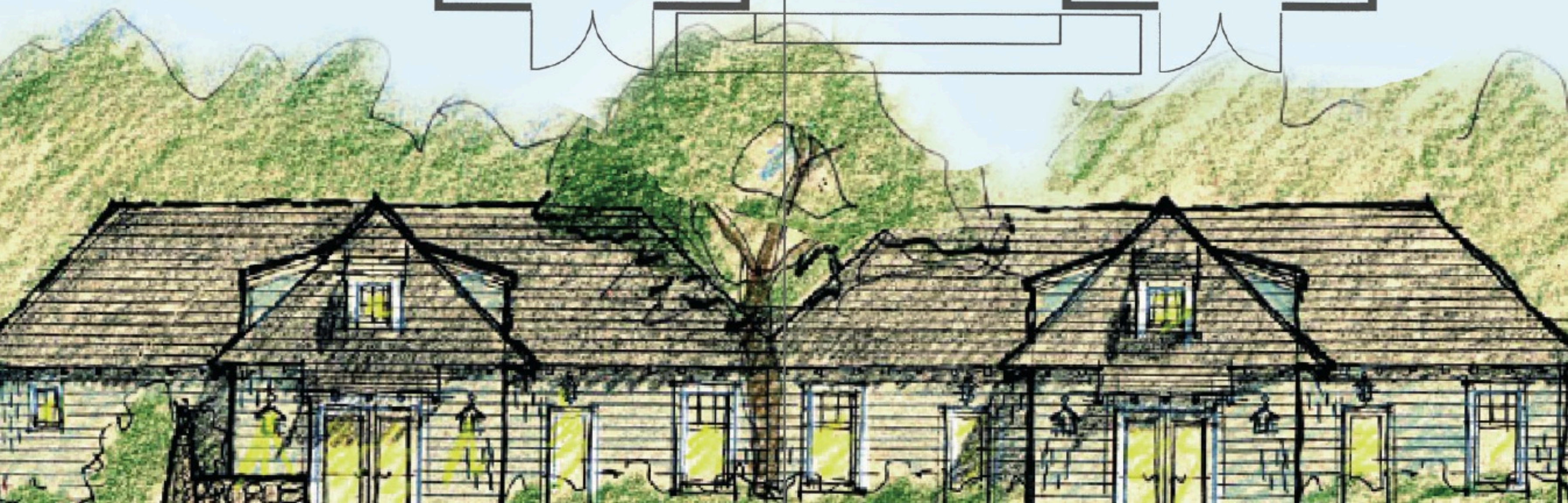
Over half the funds needed to construct the new library have been raised. We urge you to join us in this endeavor by making a tax-deductible donation. If you have already contributed, we are most grateful, and we ask you to consider an additional donation. If your company or place of business has a foundation which supports local projects, please make a request on the library's behalf or contact us.



**LOCATION**  
*Olmsted Street between  
Mt Laurel Grocery and  
Double Oak Community Church.*

**PROPOSED  
SIZE**  
*1536sq ft.*

*The design will  
allow for future  
expansion.*



The facility will be a public library to serve the  
Dunnavant Valley area of Shelby County.

**FACT:**

## WHY BUILD A LIBRARY?

### 1.

The library will serve as a center for civic, literary and cultural programs that are not currently available in the Dunnavant Valley area.



### 2.

The library will offer year-round activities for all ages, including storytime, teen activities, book clubs and informational seminars on topics of interest. It will provide a comfortable meeting room for groups in the community.



### 3.

The library will provide important public services that are not provided in any other public forum. These include educational and information services and assistance from professionals trained in information retrieval.



### 4.

The library will provide a wide range of books, eBooks, audio books, DVDs and a news bank of 600 newspapers and online databases.

### 5.

The presence of a library has been shown to enrich the quality of life in a community.

Land donated by EBSCO. Architectural services donated by Gary Justiss. All fundraising efforts volunteered. Estimated funds needed for construction: \$250,000.

## FACT:

## Q&A



**WHO** is coordinating the fundraising of the library construction?

The project is being undertaken by volunteers who have formed a non-profit association, Friends of the Mt Laurel Public Library. The Friends board is made up of a cross section of public representation from throughout the Dunnavant Valley area.

---

**WHY** are we asking for donations to build a library?

Since there are no local or state funds to build a library in this area, funding the construction of the building has to be a community project.

---

**AFTER** the library is built, who will fund the library operation?

The Mt Laurel Public Library will be a fully functioning branch of the North Shelby Library. After construction, the library will be staffed, maintained and supported by the North Shelby Library.

## Q&A

**WHAT** can I do to help?

- Make a tax-deductible donation in any amount!
  - Host a gathering to introduce friends and associates to the plans for a permanent building for the Mt Laurel Public Library.
  - Contact your employer to request a donation or matching funds.
- 

**HOW** do I make a donation?

Donations may be made as a one-time gift or may be invoiced annually, semi-annually or quarterly. Make checks payable to the North Shelby Library and designate the funds to go to the Mt Laurel Public Library. Mail to: Mt Laurel Public Library, 33 Olmsted Street, Birmingham, AL, 35242.

For more information, visit [www.mtlaurellibrary.org](http://www.mtlaurellibrary.org) and click on "Friends." Donation forms are available at the temporary library, by emailing [mtlaurellibraryfriends@gmail.com](mailto:mtlaurellibraryfriends@gmail.com) or by calling 205-981-9772.

*North Shelby Library is a 501(c)(3) organization.*

**TEMPORARY LOCATION:  
33 OLMSTED ST, BIRMINGHAM ~ 991-1660**

*www.mtlaurellibrary.org*    *mtlaurellibrary@gmail.com*

## CONTACT

**Katie Guerin** 439-5540  
*Director of Library Services*  
North Shelby Library

**Kate Etheredge** 439-5512  
*Branch Manager*  
Mt Laurel Public Library

**Ann Price** 981-9772  
*Chairman, Board of Directors*  
Mt Laurel Public Library Friends

## CALENDAR AND PROGRAM

The Mt Laurel Public Library monthly calendar of activities, including items of interest such as Storytime, Crafty Saturday, Summer Reading Program and Book Club is available at the library and at *www.mtlaurellibrary.org*.

## HOURS

**Tuesdays & Thursdays** 1–6pm  
**Wednesdays** 10am–6pm  
**Saturdays** 10am–2pm

## ONLINE

Visit *www.mtlaurellibrary.org* to view calendars, browse the catalog, reserve books and read about the proposed permanent building.

**Friends information:** Fact Sheet, Donation Forms, and Brick Order Forms are at *www.mtlaurellibrary.org*. Click “Friends” on left side of page. Become a fan on Facebook for the latest news and activities.

